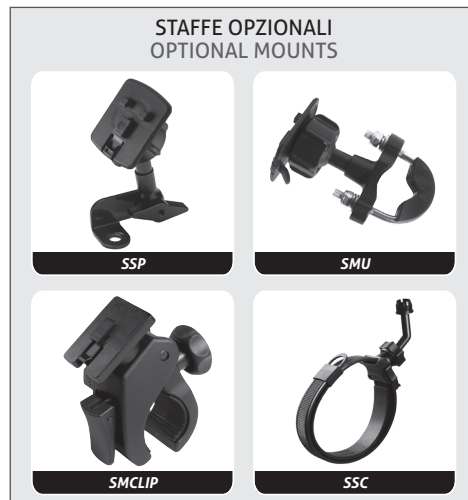


Moto Cradle

Istruzioni di montaggio
Assembly instructions 



Tutti i marchi, i nomi e i modelli di telefono cellulare sono di proprietà dei rispettivi titolari.
All trademarks, names and mobile phone models are the property of the respective companies.



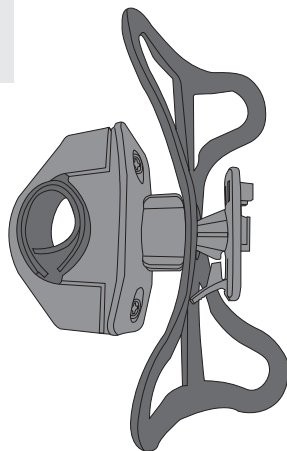
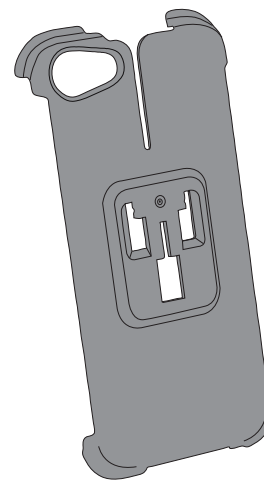
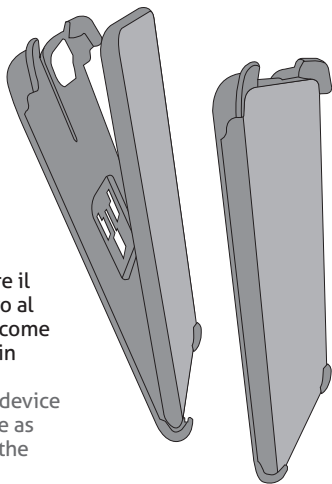
CELLULAR ITALIA S.p.A.

Distribuito da: / Distributed by:
CELLULAR ITALIA S.p.A.
via Lambrakis 1/A - 42122 Reggio Emilia - Italy
www.interphone.com
www.cellularline.com

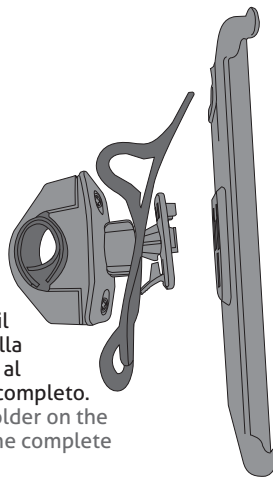
ISTRSMOTOCRADLE

1

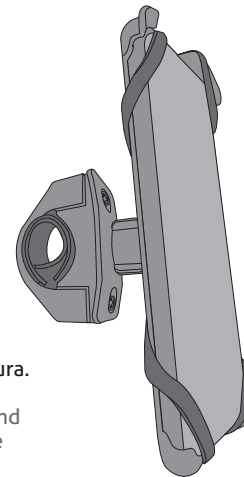
Inserire l'elastico di sicurezza
come mostrato in figura.
Insert the rubber band as
shown in the picture.

2**3****4**

Agganciare il
dispositivo al
supporto come
mostrato in
figura.
Hook the device
into cradle as
shown in the
picture.

5

Agganciare il
supporto sulla
basetta fino al
bloccaggio completo.
Latch the holder on the
base until the complete
locking.

6

Bloccare il
dispositivo con
l'elastico di
sicurezza come
mostrato in figura.
Fix the device
with rubber band
as shown in the
picture.